

**THIS COMPLETE RECYCLING PLANT
SHOWN IN THIS LAYOUT ABOVE AND
IN THE DATA BELOW THAT CAN BE
PURCHASED FOR ABOUT
\$3,100,000.00, EX WORKS...**

**OR, IF YOU HAVE A LOWER BUDGET
RANGE...WE CAN SHOW YOU A**

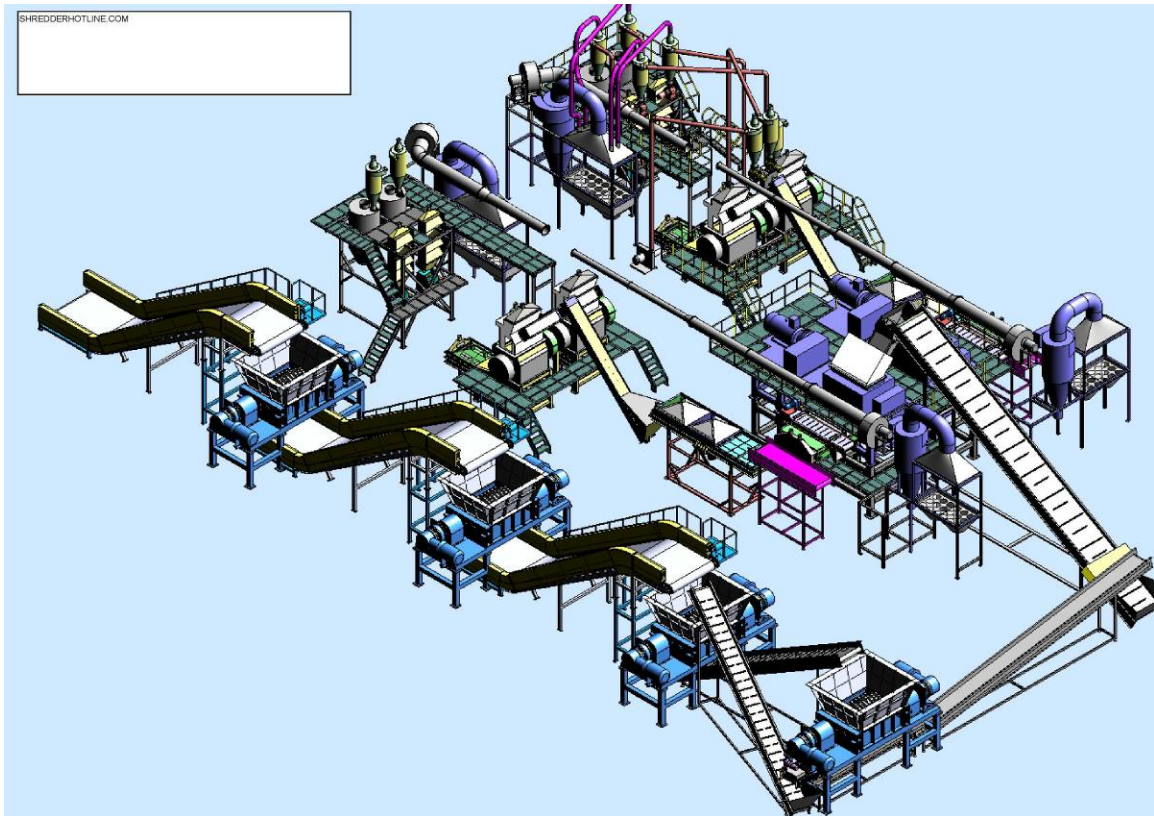
**SIMILAR SYSTEM FOR \$2,100,000.00
TO FIT YOUR LOWER BUDGET...**

**...OR IF THIS STILL DOES NOT FIT YOUR
BUDGET WE CAN OFFER A SMALLER
SYSTEM FOR \$1,300,000.00....FOR
STARTER BUDGETS...**

**OR EVEN SMALLER SYSTEMS FOR
SMALLER BUDGETS...**

OR....

OR...
.....



**THIS LAYOUT ABOVE SHOWS A MULTI
TASK DESIGN RECYCLING PLANT
THAT INCLUDES FOUR SHREDDER, AND
TWO RASPER, AND EIGHT
GRANULATORS, CAPABLE OF
PROCESSING 4 TO 5 TONS OF PRODUCT
PER HOUR.....INTO A WIDE RANGE OF
SIZES...**

THIS IS WHAT THE SHREDDER PART OF THIS 3 D DRAWING LOOKS LIKE IN THE REAL WORLD.....



THIS IS WHAT THE RASPER AND GRANULATOR SECTIONS LOOKS LIKE IN THE REAL WORLD...



**WE DESIGN AND MANUFACTURE
EVERYTHING...WE DO NOT BUY FROM
OTHERS...WE MAKE AND DESIGN
EVERYTHING...SINCE 1966**

PROFORMA OFFER FROM:

COST OF FULL GREEN BAY WITH 8	SELLING PRICE
INFEED CONVEYOR 1	\$35,000.00
SHREDDER 1 WITH RAM HOPPER AND STAND	\$350,000.00
INFEED CONVEYOR 2	\$35,000.00
SHREDDER 2 WITH HOPPER AND STAND	\$300,000.00
INFEED CONVEYOR 3	\$25,000.00
SHREDDER 3 WITH HOPPER AND STAND	\$300,000.00
INFEED CONVEYOR 4	\$15,000.00
SHREDDER 4	\$300,000.00
RECIRC CONVEYOR	\$7,500.00
DISC SCREEN	\$12,000.00
DISCHARGE CONVEYOR	\$5,500.00
SQUARE TRANSITION CONVEYOR	\$5,500.00
INFEED CONVEYOR TO RASPER	\$14,000.00
MAGNETIC DETECTOR	\$2,500.00
RASPER 1	\$350,000.00
RASPER 2	\$350,000.00
RASPER 1 DISCHARGE CONVEYOR	\$4,500.00
RASPER 2 DISCHARGE CONVEYOR	\$4,500.00
RASPER 1 MAGNET	\$7,500.00
RASPER 2 MAGNET	\$7,500.00
RASPER 1 TRANSITION CONVEYOR	\$2,900.00
RASPER 2 TRANSITION CONVEYOR	\$2,900.00
RASPER 1 VIBRATORY	\$7,500.00
RASPER 2 VIBRATORY	\$7,500.00
RASPER 1 AUGER	\$2,500.00
RASPER 2 AUGER	\$2,500.00
RASPER 1 AIR SYSTEM	\$5,500.00
RASPER 2 AIR SYSTEM	\$5,500.00
RASPER 1 SCAFFOLDING	\$1,500.00
RASPER 2 SCAFFOLDING	\$1,500.00
RASPER 1 GRANULATOR 1	\$55,000.00
RASPER 1 GRANULATOR 2	\$55,000.00
RASPER 1 GRANULATOR 3	\$55,000.00
RASPER 1 GRANULATOR 4	\$55,000.00
RASPER 2 GRANULATOR 1	\$55,000.00
RASPER 2 GRANULATOR 2	\$55,000.00
RASPER 2 GRANULATOR 3	\$55,000.00
RASPER 2 GRANULATOR 4	\$55,000.00
RASPER 1 GRANULATOR 1 VIBRATORY	\$6,500.00
RASPER 1 GRANULATOR 2 VIBRATORY	\$6,500.00
RASPER 1 GRANULATOR 3 VIBRATORY	\$6,500.00
RASPER 1 GRANULATOR 4 VIBRATORY	\$6,500.00
RASPER 2 GRANULATOR 1 VIBRATORY	\$6,500.00

RASPER 2 GRANULATOR 2 VIBRATORY	\$6,500.00
RASPER 2 GRANULATOR 3 VIBRATORY	\$6,500.00
RASPER 2 GRANULATOR 4 VIBRATORY	\$6,500.00
RASPER 1 GRANULATOR 1 WAFFLE CLEANER	\$2,500.00
RASPER 1 GRANULATOR 1 MAG PLATE	\$1,000.00
RASPER 1 GRANULATOR 2 WAFFLE CLEANER	\$2,500.00
RASPER 1 GRANULATOR 2 MAG PLATE	\$1,500.00
RASPER 1 GRANULATOR 3 WAFFLE CLEANER	\$2,500.00
RASPER 1 GRANULATOR 3 MAG PLATE	\$1,500.00
RASPER 1 GRANULATOR 4 WAFFLE CLEANER	\$2,500.00
RASPER 1 GRANULATOR 4 MAG PLATE	\$1,500.00
RASPER 2 GRANULATOR 1 WAFFLE CLEANER	\$2,500.00
RASPER 2 GRANULATOR 1 MAG PLATE	\$1,500.00
RASPER 2 GRANULATOR 2 WAFFLE CLEANER	\$2,500.00
RASPER 2 GRANULATOR 2 MAG PLATE	\$1,500.00
RASPER 2 GRANULATOR 3 WAFFLE CLEANER	\$2,500.00
RASPER 2 GRANULATOR 3 MAG PLATE	\$1,500.00
RASPER 2 GRANULATOR 4 WAFFLE CLEANER	\$2,500.00
RASPER 2 GRANULATOR 4 MAG PLATE	\$1,500.00
RASPER 1 GRANULATOR 1 STAND	\$1,000.00
RASPER 1 GRANULATOR 2 STAND	\$1,000.00
RASPER 1 GRANULATOR 3 STAND	\$1,000.00
RASPER 1 GRANULATOR 4 STAND	\$1,000.00
RASPER 2 GRANULATOR 1 STAND	\$1,000.00
RASPER 2 GRANULATOR 2 STAND	\$1,000.00
RASPER 2 GRANULATOR 3 STAND	\$1,000.00
RASPER 2 GRANULATOR 4 STAND	\$1,000.00
RASPER 1 GRANULATOR AIR SYSTEM	\$9,500.00
RASPER 2 GRANULATOR AIR SYSTEM	\$9,500.00
RASPER 1 WIRE CLEAN GRINDER	\$45,000.00
RASPER 1 WIRE BALER	\$65,000.00
RASPER 2 WIRE CLEAN GRINDER	\$45,000.00
RASPER 2 WIRE BALER	\$65,000.00
GRAVITY TABLE 1	\$12,000.00
GRAVITY TABLE 2	\$12,000.00
GRAVITY TABLE 3	\$12,000.00
GRAVITY TABLE 4	\$12,000.00
GRAVITY TABLE 5	\$12,000.00
GRAVITY TABLE 6	\$12,000.00
GRAVITY TABLE 7	\$12,000.00
GRAVITY TABLE 8	\$12,000.00
CONTROL PANEL	\$75,000.00
TOTAL	\$3,112,300.00

SHREDDERHOTLINE.COM

AND

GLOBAL RECYCLING EQUIPMENT.COM

FOR : CLIENT NAME INSERT HERE....



**THIS PICTURE ABOVE, SHOWS ONE
EXAMPLE, OF OUR MINI RECYCLING
SYSTEMS THAT WE DESIGN AND BUILD.**

**THIS SYSTEM SHOWN ABOVE WAS
SOLD TO THE US ARMY IN IRAQ...FOR
UNDER \$950,000.00 DOLLARS...TO
GRIND TIRES AND SCRAP METAL...**

**A COMPLETE MINI PLANT...UNDER 1
MILLION DOLLARS....AND THIS DESIGN
MAKES A WIRE FREE - TIRE
LANDSCAPE AND PLAYGROUND TYPE
OF GRANULE...**

**THE DATA OUTLINED BELOW EXPLAINS
IN DETAIL THROUGH SALES AND
ENGINEERING DATA, OUR MULTI
FUNCTION PROCESSING DESIGN FOR
THE PROCESSING (SHREDDING) OF :**

SCRAP METAL,

C AND D,

DEMOLITION MATERIALS,

TIRES,

PALLETS,

WIRE CABLE,

E WASTE,

AND MANY OTHER MATERIALS.....

**SHALL WE GO ON...WITH MORE
DATA...AND ITS CAPABILITIES....???**

WE DESIGN MANY TYPES OF SYSTEMS BUT THIS SPECIFIC PROCESSING LINE IS COMPRISED OF FOUR (4) 7272 MODEL SHREDDERS, TWO (2) 6060 RASPERS AND EIGHT (8) GRANULATORS, AND ALSO INCLUDES "ALL" OF THE AUXILIARY EQUIPMENT, TO PROVIDE A "COMPLETE" SYSTEM THAT MAKES AN END PRODUCT FROM WASTE MATERIALS, AND IN THIS EXAMPLE, END PRODUCTS FROM TIRES

PRODUCTS THAT RANGE FROM 50MM FUEL CHIPS, TO 12MM WIRE FREE GRANULES, TO 10 MESH CRUM AT 4 TO 5 TONS PER HOUR, CAPABLE OF OPERATING 24 HOURS PER DAY, 365 DAYS PER YEAR.

WE CAN DOWNSIZE THIS PLANT FOR BUDGETS...

BUT MOST PLANTS ARE IN THE 1.5 TO 3.5 MILLION DOLLAR RANGE USING THIS DESIGN AND TECHNOLOGY.

THE DATA BELOW SHOWS THE FIRST PART OF THE SYSTEM WHICH IS THE FOUR SHREDDER LINE, WHICH SELLS BY ITSELF, FOR ABOUT ONE MILLION DOLLARS....

IF YOU WANT THIS FRONT END SYSTEM ONLY...STOP HERE, AND JUST ORDER THE FOUR SHREDDER PLANT...TO MAKE 2" MATERIAL...OUT OF ALMOST ANYTHING...



THIS SYSTEM ABOVE INVOLVES FOUR (4) SHREDDERS, IN LINE, EACH HAVING A VALUE, IF PURCHASED "FROM OTHERS", OF AT LEAST \$550,000.00 TO \$650,000.00 EACH, OUR AVERAGE PRICE FOR THESE SHREDDERS IS LESS THAN \$350,000.00 EACH...

**WHICH MEANS WE CAN SAVE YOU
ABOUT 1 MILLION DOLLARS ON THIS
PURCHASE ALONE...THAT IS WHY
FACTORY DIRECT IS THE ONLY WAY TO
BUY EQUIPMENT....NOT THROUGH
DEALERS OR REPS OR THIRD
PARTIES...DIRECT FROM THE
MANUFACTURER...**



**THE FOUR MACHINE SHREDDING
SYSTEM INCLUDES A STEEL BELT
CONVEYOR SYSTEM, AND A RUBBER
BELT CONVEYOR SYSTEM, WITH A DISC
SCREEN SYSTEM, TO MAKE A 2" CHIP
FROM VARIOUS MATERIALS OUTLINED
ABOVE...**

PROCESS SCRAP METAL ON MONDAY,

TIRES ON TUESDAY,

WOOD WASTE ON WEDNESDAY

AND OTHER MATERIALS

**SUCH AS NON FERROUS SCRAP METAL
AND WIRE CABLE ON THURSDAY....**



THIS PICTURE ABOVE SHOWS ONE OF OUR FOUR SHREDDER PROCESSING SYSTEMS WITH TWO 7272 SHREDDERS AND TWO 5444 SHREDDERS IN A LINEAR FORM.



**THE LAST TWO SHREDDERS ARE SET
TO MAKE THE FINAL 2" CUTS...**



**ALSO INCLUDED IN THIS INFORMATION
IS DATA ON OUR SINGLE OR OTHER
MULTIPLE SHREDDER LINE OPTIONS...**

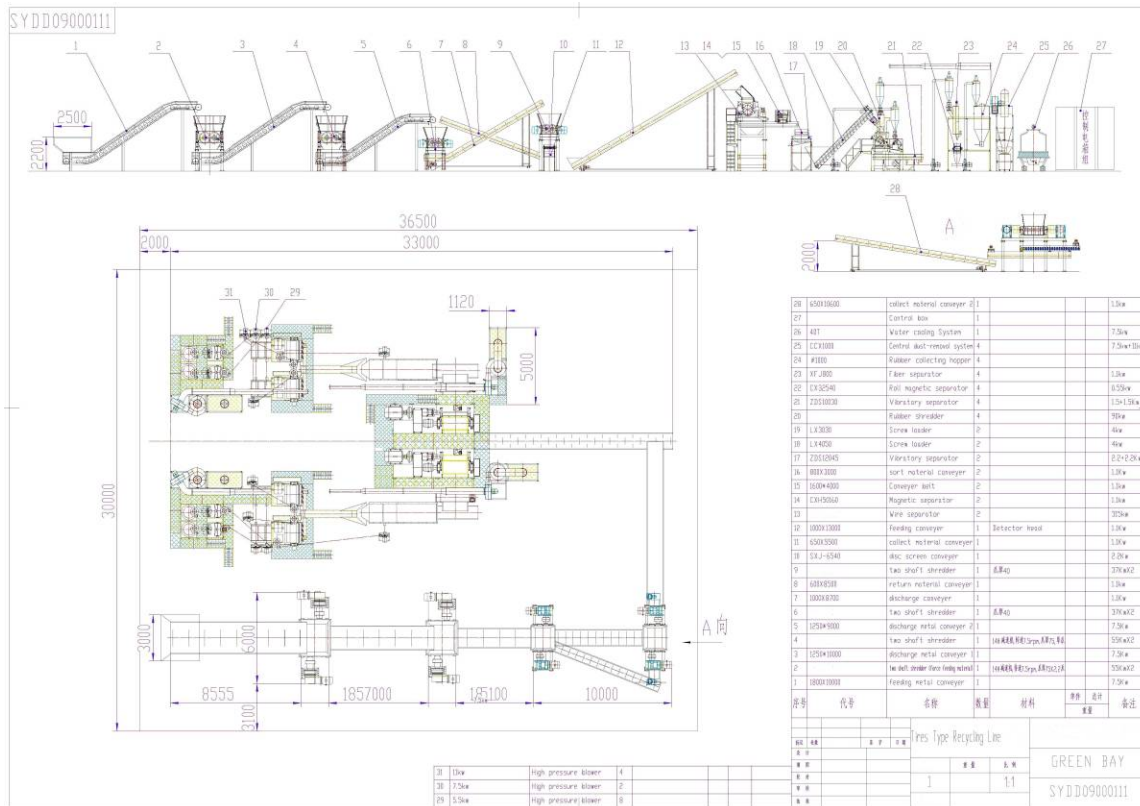
**THAT YOU CAN FINALLY AFFORD TO
BUY.....**



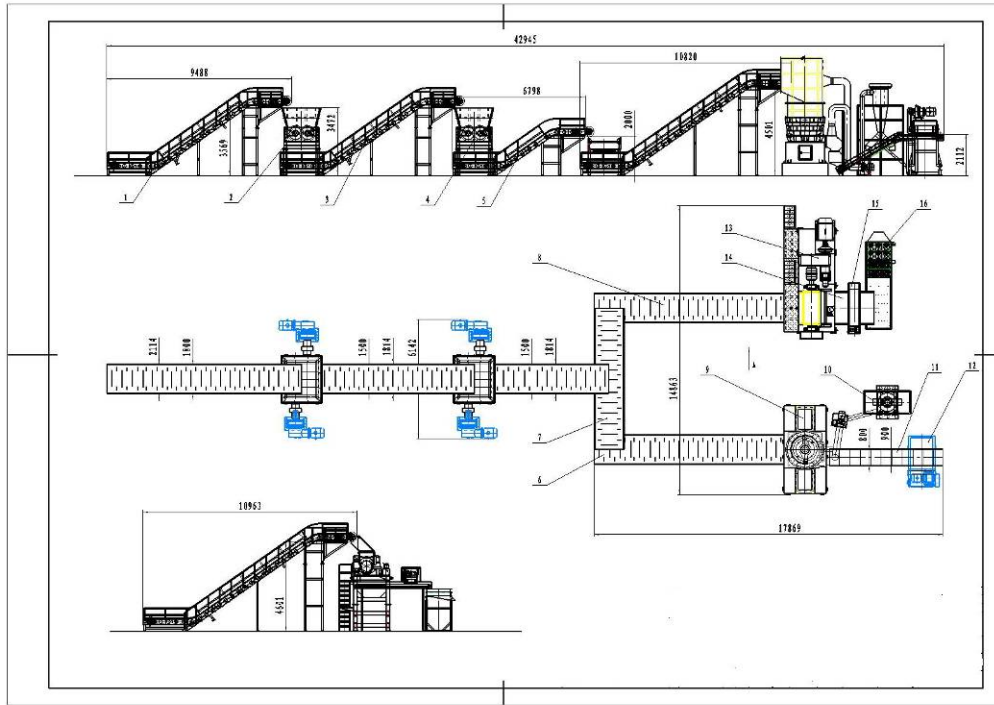
**THIS PICTURE ABOVE SHOWS THE
BACK END OF THE FOUR SHREDDER
SYSTEM BEING OFFERED IN THIS
PROFORMA DATA.**

**THE FOUR SHREDDER LINE BY ITSELF
IS 140 FEET LONG AND 35 FEET WIDE.**

THE ENTIRE PLANT IS A 140 FEET LONG AND 140 FEET WIDE...



THE FLOW OF MATERIAL IN THIS LINE VARIES....ONCE SHREDDED IN THIS FOUR SHREDDER SYSTEM YOU CAN THEN EITHER GO TWO WAY...



ONE DIRECTION FOR THE MATERIAL MOVEMENT IS INTO OUR VERTICAL DENSIFIER FOR SCRAP METAL OR WOOD WASTE

ANOTHER DIRECTION FOR THE MATERIAL MOVEMENT IS INTO OUR MEDELLINE FLX SYSTEM (RASPER) FOR TIRES AND WOOD AND PLASTIC...

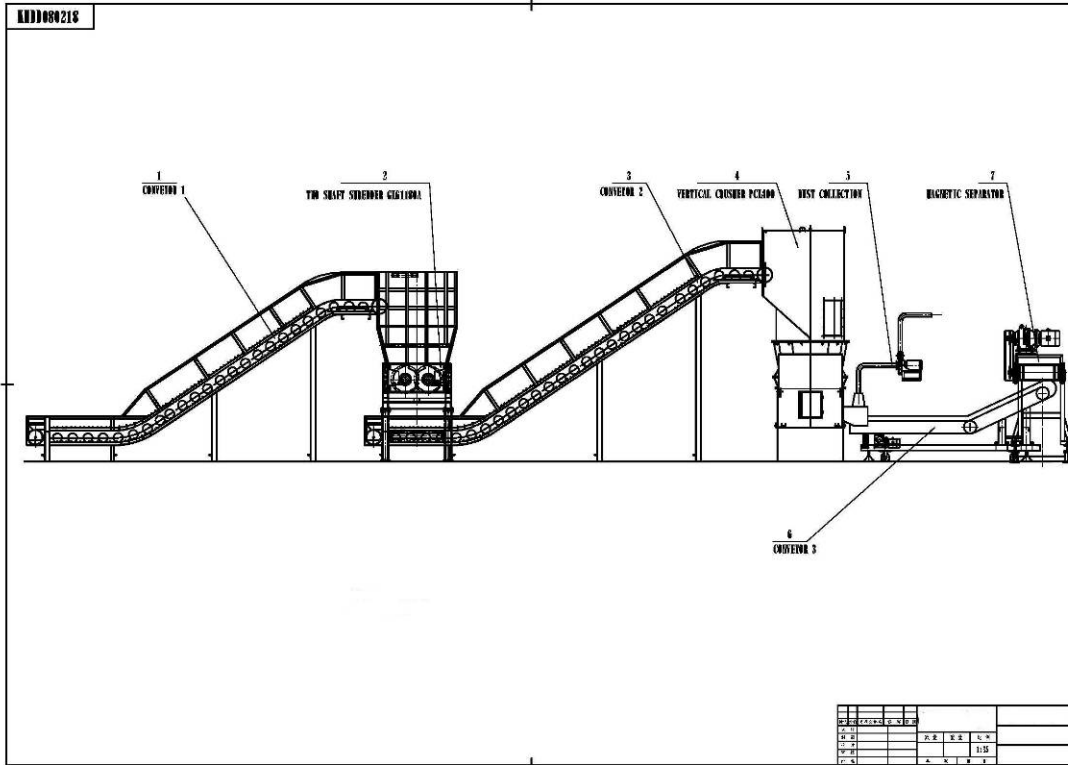


THIS PICTURE ABOVE SHOWS OUR VERTICAL GRINDER DENSIFIER FOR SCRAP PROCESSING APPLICATIONS....

IT IS USED AFTER THE FOUR SHREDDER LINE ,TO TURN SCRAP METAL INTO A FRAG FORM...AND WOOD MATERIAL INTO A MULCH...



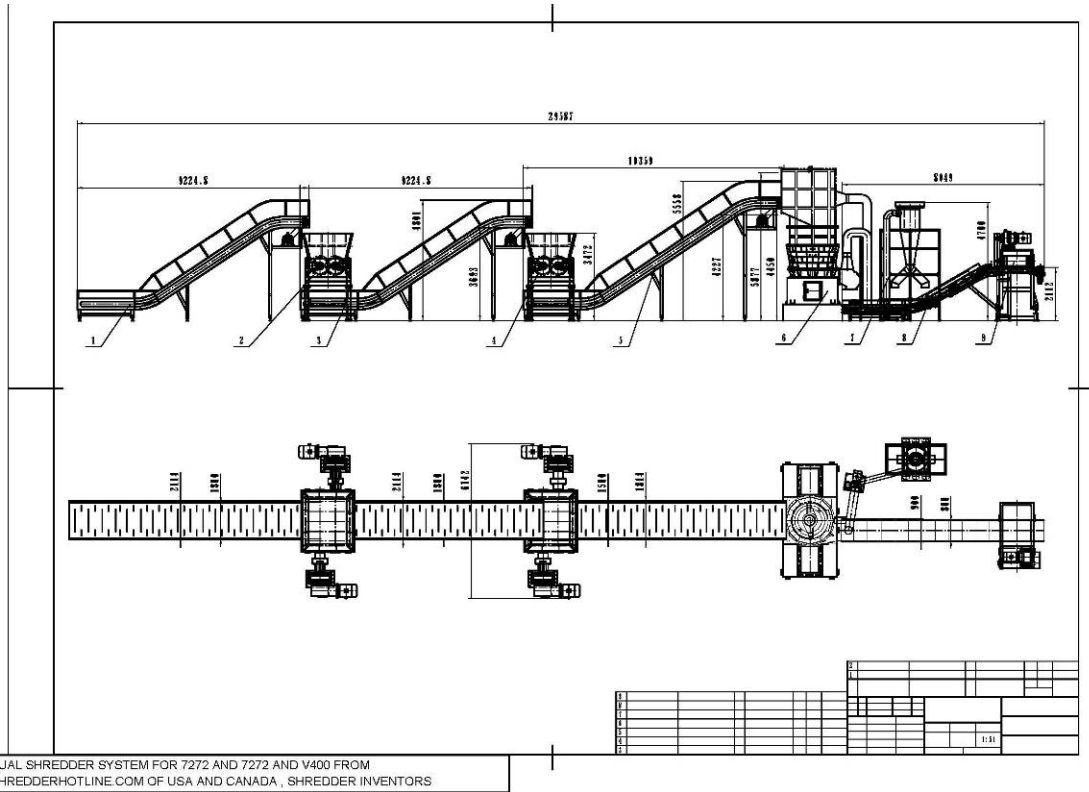
**THIS PHOTO ABOVE, SHOWS OUR
DENSIFIED SCRAP METAL FROM OUR
EIDAL LINEAR PROCESSING DESIGNS
PIONEERED BY OUR GROUP SINCE 1966**



THE LAYOUT ABOVE SHOWS A SINGLE SHEAR SHREDDER AND A SINGLE GRINDER DESIGN

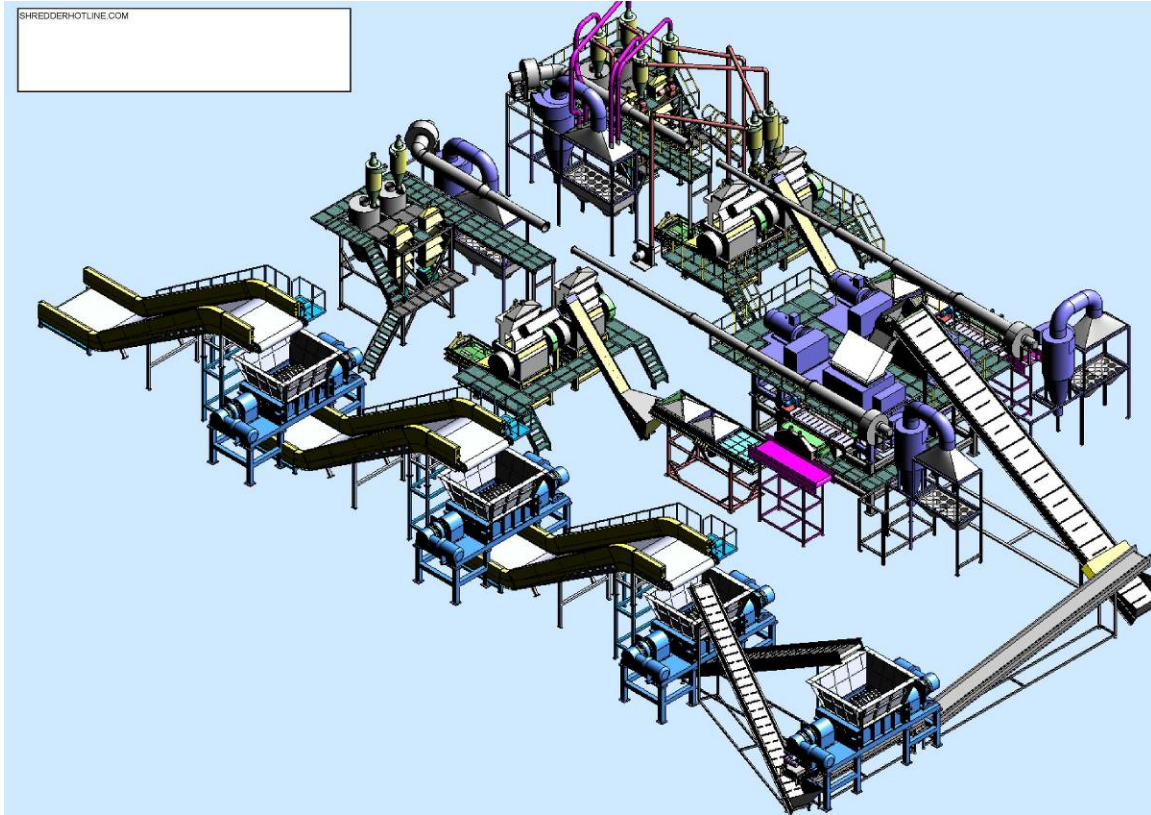


**THIS PICTURE ABOVE SHOWS OUR
SINGLE SHEAR SHREDDER AND DUAL
SSG GRINDERS FOR WASTE
PROCESSING**



**THE SYSTEM LAYOUT ABOVE IS
DESIGNED FOR TWO SHEAR
SHREDDERS AND ONE VERTICAL
GRINDER**

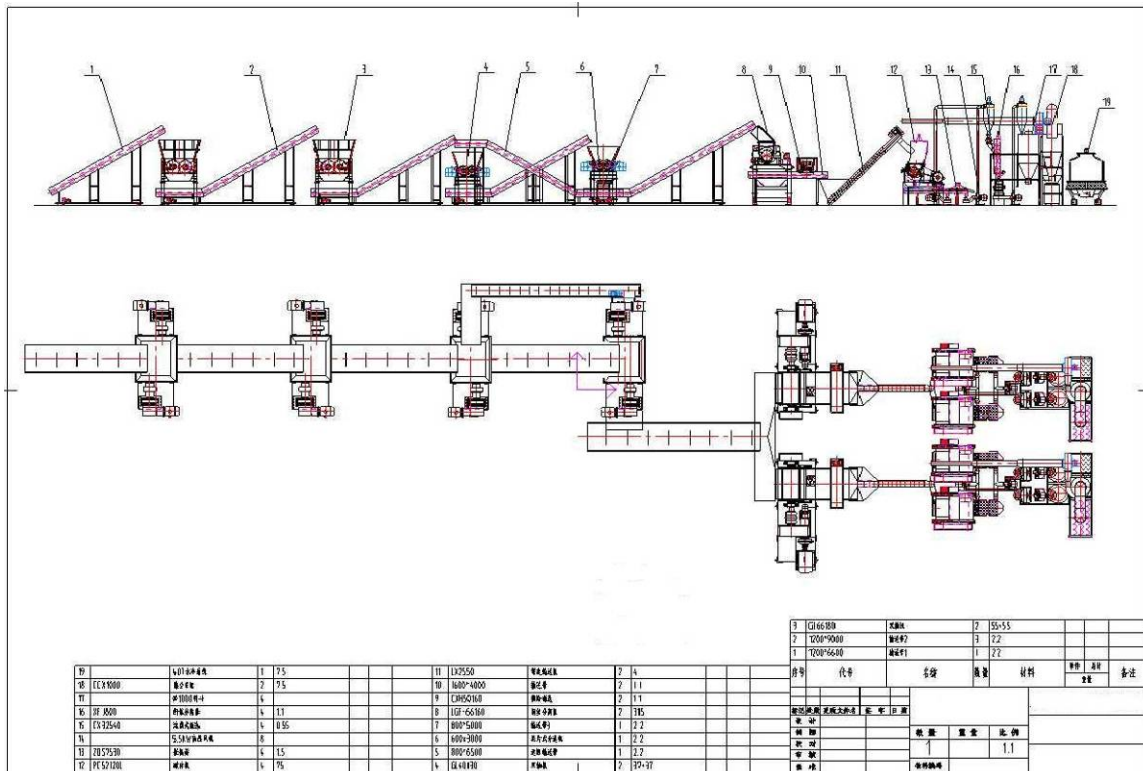
**HOWEVER IF THIS IS NOT DESIRED IN
THE SYTSEM...YOU CAN GO INTO OUR
MEDELLINE SYSTEM....**



THE LAYOUT ABOVE AND DATA IN THIS DOCUMENT OUTLINES OUR MAIN SYSTEM OFFER OF \$3,150,000.00....

AS SHOWN IN THE LAYOUT BELOW WE ARE PROMOTING A SYSETM WITH FOUR SHREDDERS AND TWO RASPERS AND FOUR GRANULATORS....

THIS COMPLETE SYSTEM PROCESSES TIRES AND OTHER MATERIALS TO A WIRE FREE FORM AND TO A GRANULAR FORM...



THIS LAYOUT ABOVE AGAIN SHOWS OUR GREEN BAY DESIGN WITH TWO MEDELLIN FIX SYSTEMS FOR ...\$3,150,000.00 EX WORKS...

**SHIPPING IS ABOUT \$150,000.00...AND
YOU CAN INSTALL THE SYSTEM IN
ABOUT A TWO WEEKS...**



**THIS PICTURE ABOVE SHOWS OUR
MEDELLIN SYSTEM (PART OF THIS
PLANT) THAT TAKES MATERIALS
DOWN TO A SMALLER SIZE....USING**

**TWO RASPER LINES...EACH LINE
WORTH ABOUT 1.5 MILLION IF
PURCHASED SEPARATELY...**

**THIS SYSTEM IS DESIGNED TO TAKE
TIRE CHIPS TO A WIRE FREE FORM AND
TO TAKE WOOD WASTE TO A METAL
FREE FORM...**

WE CAN GO ON AND ON...



**THIS PICTURE ABOVE SHOWS THE
INSIDE OF OUR RASPER AS MOST
PEOPLE HAVE NEVER SEEN ANYTHING
LIKE THIS DESIGN IN THEIR WHOLE
LIVES...**

**IT'S A SPECIAL MACHINE THAT DOES
SPEICAL THINGS...**

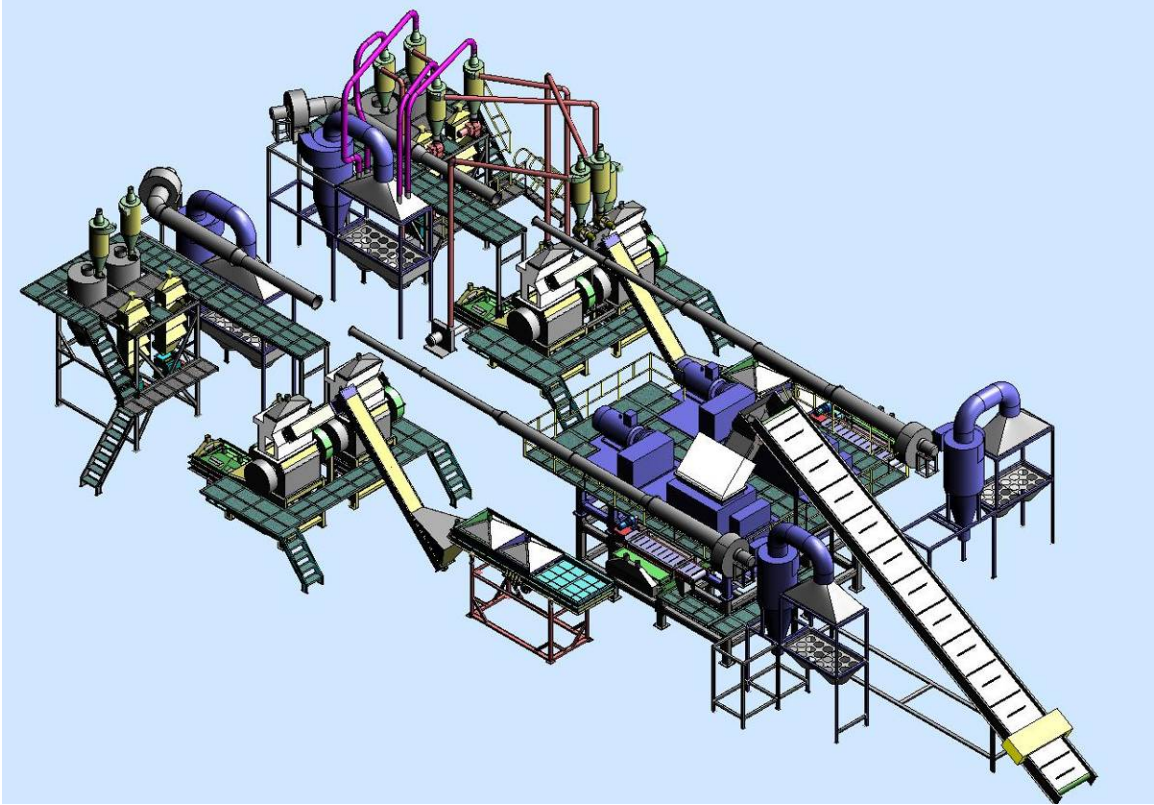
**THE INDUSTRY IS RAVING ABOUT THIS
MACHINE AND ITS APPLICATIONS...**

**ALL RECYCLING SYSTEMS NEED THIS
MACHINE...AND ITS NEW TO THE
FIELD...AND ONLY 25 YEARS OLD...**

**IT'S A WINNER FOR THE RECYCLING
INDUSTRY..AND CRITICAL FOR TIRE
PROCESSING....TO A WIRE FREE FORM...**



THIS PICTURE ABOVE SHOWS OTHER DESIGN FEATURES IN THE RASPER SYSTEM WHICH INVOLVE A MAGNETIC SYSTEM AND SCREENING SYSTEM AFTER THE RASPERS ..



**THIS PICTURE BELOW SHOWS WHAT
THE REAL SYSTEM LOOKS LIKE...**



AFTER WIRE REMOVAL, THE MATERIAL FLOWS FROM THE RASPERS INTO THE GRANULAR STAGE WHERE WE MAKE FINE GRANULAR PRODUCTS.



THIS PICTURE ABOVE SHOWS A DUAL GRANULAR SYSTEM WITH ITS ASSOCIATED SCREENING SYSTEM AND AIR SYSTEM AND MAGNETIC SYSTEM..

THIS PART IS ALSO WORTH A MILLION DOLLARS BY ITSELF....

....AND OUR SYSTEM HAS TWO OF THESE IN THE DESIGN...

THIS DOUBLE PACKAGE IS INCLUDED IN OUR WHOLE SYSTEM DESIGN OUTLINED ABOVE FOR \$3,150,000.00....

YES.....

YOU HEARD US RIGHT.....

WE HAVE THIS WHOLE PACKAGE OFFERED FOR ABOUT 3.1 MILLION...AND NOT 6 MILLION...LIKE EVERYONE ELSE...

YES....YES...YES.....OTHERS WHO MAKE SHREDDERS WOULD QUOTE YOU ABOUT 6 MILLION...FOR THE SAME SYSTEM...

**THAT IS WHY WE ARE BUSY....AND
THAT IS WHY WE ARE THE LARGEST IN
THE WORLD...**

AND...

**THAT IS WHY YOU HAVE CONTACTED
OUR GROUP...**

**OUR SYSTEMS AND MACHINES
PROCESS A WIDE RANGE OF
DIVERSIFIED MATERIALS SO THAT
YOU CAN MAKE MONEY....RECYCLING...**

**OUR SYSTEMS AND MACHINES HANDLE
MATERIALS THAT YOU HAVE
ALWAYS DREAMED OF PROCESSING...**

WE MAKE WHAT WE BUILD

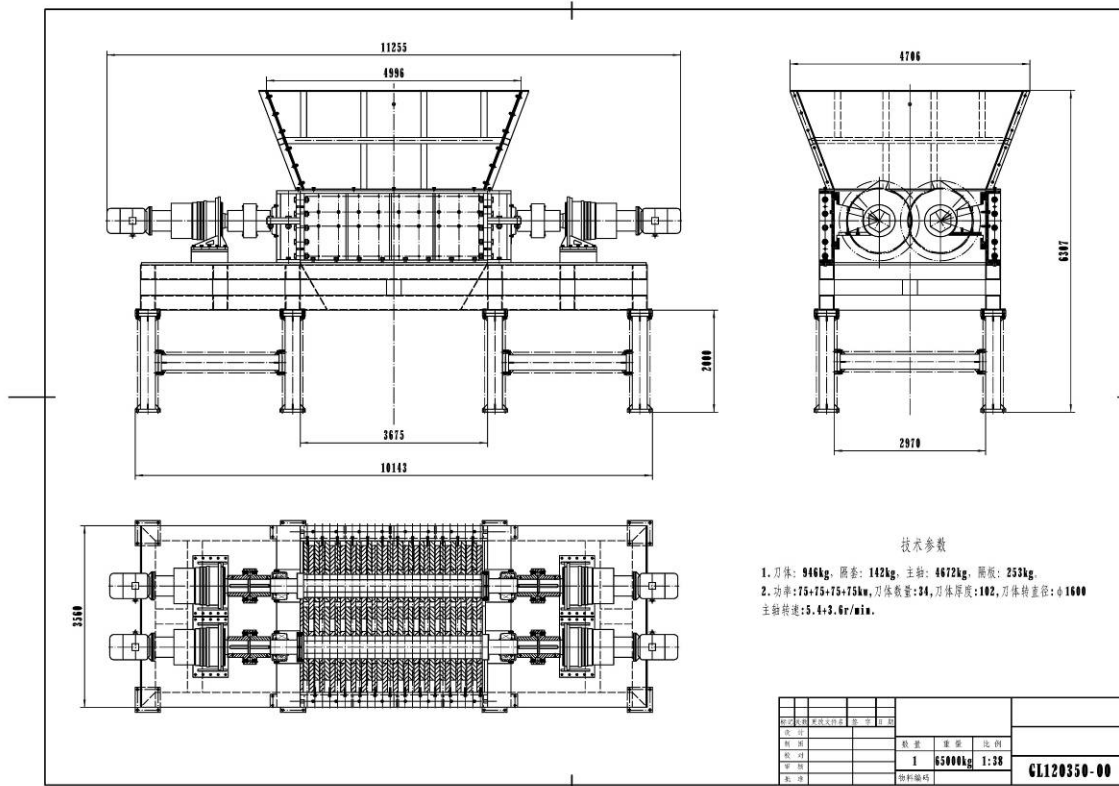
WE DESIGN WHAT WE BUILD....

WE ARE FAMILY OWNED....



THIS SHREDDER, SHOWN ABOVE, WAS SHIPPED TO SOUTH AFRICA FOR SCRAP SHREDDING WHERE THE BUDGET FOR A LARGE CAR SHREDDER WAS OUT OF THE QUESTION....

**WE OFFER HEAVY DUTY SHREDDERS
AT REASONABLE PRICES.....**



**WE MAKE INDUSTRIAL SHREDDERS AT
GLOBAL PRICES.....**

**AS MENTIONED ABOVE, MOST OF THE
TIME... WE ARE HALF THE PRICE OF**

**OTHERS....AND WE GUARANTEE
THAT...**

**OUR SYSTEMS ARE COMPLETE WITH
STEEL BELT CONVEYORS.....**



**BECAUSE OF OUR PRICING THEY ARE
BEING SOLD ALL OVER THE WORLD...**

TELL US WHAT YOU NEED...

**WE WILL DESIGN AND BUILD IT FOR
YOU...**

SEE US AT:

WWW.GLOBAL-RECYCLING-EQUIPMENT.COM

GLOBAL RECYCLING EQUIPMENT COMPANY

www.global-recycling-equipment.com

www.globalrecyclingequipment.com

SHREDDERHOTLINE.COM COMPANY INC

www.shredder-hotline.com

www.shredderhotline.com

TITAN SHREDDERS

www.titan-shredder.com

www.titanshredder.com



P.O. Box 399
707 North Park Street.
Streator, Illinois 61364 U.S.A

sales@shredderhotline.com
shredderhotline@gmail.com

www.shredderhotline.com

Dan Burda – (Chicago) P815-674-5802 / Dan Burda
Andres Salazar (Miami) – P815-992-2208
Ian Hazan-Weston – (Montreal) P815-992-1900
Jon Porter (Salt Lake City Utah) P801-809-8442
USA Toll Free 888-426-1971
China Cellular – Dan when in Shanghai 011-86-131-227-16798
China Cellular - Andres when in Guangzhou 011-86-139-222-72168,
“Emergency” Canada Cellular – Emergency Montreal 514-883-2507

Date of Letter: July 27, 2006
Date of Printing: January 5, 2010

SHREDDERHOTLINE.COM INTERNATIONAL INC.

This data is provided to help you understand more about Global Recycling Equipment, and its 45 year history, as a pioneer and leader in the Green Movement, and that we design and build, economically viable recycling system, to process waste materials, into value added products and materials.



This data below outlines the use of our Single and Multiple Shredder, Processing Lines.

WE ARE THE ONLY COMPANY IN THE WORLD....to build shredding lines, that involve single and multiple shredders to process waste materials with worldwide manufacturing, the ONLY way you can afford the opportunity of processing waste materials properly.

In the past, shredders were so expensive that many sacrifices had to be made by the design team and the buyer for their shredding system.

Today with our substantially lower manufacturing cost we can provide a proper design, with the correct

processing methods and equipment, for shredding systems that can process a wide range of materials.

The data outlined in this sales sheet will show one, two, three and four shredder systems. We call these linear systems as material is processed in a progressive manner from whole form to a reduced size form.



An example is Bale Shredding of UBC stock or Whole Tire shredding where the ultimate outcome is the production of a 2" chip or 2" shred.





In a four shredder system there are obviously four stages that perform certain functions.

The four shredder system normally involves one or two series of machines to accomplish a proper shredding task.

Here is an example of a four shredder line...



The Primary Shredder in this data is a Model 7272 Shredder to pre shred material into a rough 6" cut.



The Secondary Shredder in this data is another Model 7272 shredder used to shred material from the Primary Shredder into a rough 3” cut.



The Tertiary Shredder (3rd in Line) in this data is either a Model 7272 shredder or a Model 5444 shredder to shred material from the Secondary Shredder into a rough 2” cut.



The Fourth Shredder (4th in Line) in this data is either a Model 7272 shredder or a Model 5444 shredder to shred material from the Tertiary shredder into a more uniform 2” size.



If the system needs to produce a smaller 1” particle then the system will use two or three more shredders to accomplish the progressive grinding to this particle size.

In this example, the Fifth shredder (5th in Line) can be either a Model 7272 shredder or a Model 5444 shredder with a 1.5” cut.



The Sixth shredder (6th in Line) can be either a Model 7272 shredder or a Model 5444 shredder with a 1” cut.



The Seventh shredder and generally last unit in this system (7th in Line) can either be a Model 7272 shredder or a Model 5444 shredder with a 1” cut.

This data shows a system design that is just being accepted into this industry...due to the fact that it can be affordable in todays market where it was not in the past.

Multiple shredding plants have been sacrificed and single shredding plants have been provided in the past to attempt or provide similar shredding results of a multiple shredder plant...

However, sad as it may sound...they result was not very good but since there were no other alternatives it had to be used.

Now the proper system design and the proper shredders can be used to provide the right system.

No only are the proper size shredders used but the proper sized cutter and drive horsepower is used at the proper stages to handle the progressive grinding accomplished in these systems.



The picture above shows a system designed to process a wide range of materials in this case, 500 to 600 Truck, and Passenger tires, per hour, into a 2" fuel chip or shred size.

The same system can process specific electronic scrap into a 2' chip or shred size

The same system can process specific scrap metal into a 2" chip or shred size.



It can also process wood waste into a 2' chip...or shred size...

Average cost of a chip line with one to eight shredders varies from \$250,000.00 for one shredder alone, to over \$2,750,000.00 for six shredders in various design package groups.

The system and data above, uses two 24” shaft center design machines, and two 16” shaft center design machines in a linear design to make a 2” fuel chip or shred size.

If you do not know what “shaft center design” means, it is a simple standard set by my family, by which you can then determine the actual size of the shafts and the cutters in a specific machine, regardless of who makes that machine.



The larger the shaft center distance, the more heavy duty the machine design. In today's applications the use of heavy duty shredders are required and the future of larger and larger shear shredders will evolve with the advent of lower cost manufacturing from our Asian plants.



THIS PICTURE IS OF THE SMALLER 5444 UNIT...WE DON'T MAKE TOYS....

WE MAKE BIG SHREDDERS....

BECAUSE OUR CLIENTS HAVE BIG SHREDDING PROJECTS...

OUR CLIENTS DON'T WANT TOYS...

WE ONLY MAKE HEAVY DUTY SHREDDERS BUILT TO LAST...

Depending on the application, the Shredder Throat opening (Infeed Opening) and the associated Horsepower (Hp and RPM and Torque) is then determined by our engineering group, so that you can utilize the best system design with the proper Hp to Throughput ratio.



Most companies that make shredders, do not know how to explain the relation between shaft center distance design, throat opening, horsepower, cutter design, and other shredder design configurations of a shredder,

Most groups who claim to make shredders just sell from their colored brochures, and don't know anything about their equipment, which is a sad fact of life...

But more importantly, many groups have not transitioned to Worldwide manufacturing to lower their cost to you, the buyer.

We can build a shredder for half the price of our competition...they use American Labor and Pricing we use Global Labor and Pricing...

But if you want me to make our shredder in America or Europe we do that every day...as some clients want an American Made or European Made Unit...but the price is twice that of our Globally made shredders which have the same quality and same design...we design shredders and we build shredders...its that simple...since 1966.

We have been GLOBAL...since 1974, with expansion in 1977, and again with expansion into Global manufacturing in 1993, 1997, and 2004....and even today in 2010 we are expanding overseas to lower the price of our shredders so that you can afford the right shredder at the right price.

We have accomplished this task because we were the first in the world to invent this technology in 1966 (Coats Patent and Eidal Patents) ...and our group has made the move to Worldwide manufacturing for you....



Everyone else has had to concentrate on copying our older shredder designs, in an attempt to keep up with our Company...

We don't copy from anyone...we invent and design for you and your needs...

This concludes our proposal.

Our Group welcomes your inquiry.

Sincerely,

**_____
Dan Burda
President of Global Recycling Equipment**

All Copyright, Trademark and Patent Rights Reserved 1966-2010, Proprietary and Confidential Data of Dan Burda, Restricted Use Notification., Attorney Client Privilege. As part of our continuing design and engineering program, we reserves the right to make changes at any time in materials, models, specifications and prices

without prior, written notice or obligation. All Equipment is offered subject to prior sale or disposition and written confirmation prior to acceptance of offer from Buyer. All Orders and Services are accepted only according to a Liability Release, General Terms and Conditions Policy, provided with all orders, additional copies available upon request. Scanning of our computer systems are not authorized and is considered a violation of our constitutional and legal rights.

We are the Original Owners and Inventors of the Saturn Shredder, Eidal Shear Shredder and SSI International Shredder Lines. We are the Secondary Owner/Supplier of Eidal Vertical Shredder Lines, Duerr Wood Chipper, Tool Barn Wood Chipper, Techwood Wood Chipper, Cougar Wood Chipper and Machete Wood Chipper Lines. We provide Engineering, Parts and Service for all waste processing type shredding and processing equipment.

We are a Worldwide Manufacturing Group that offer Consultation, Turnkey Manufacturing Systems, Industrial Equipment, Environmental and Recycling Equipment, OEM/OE Production Systems and Parts, Contract Engineering Design and Consultation, Domestic and Worldwide Sales and Marketing Services, Domestic and International OEM/OE Manufacturing Services, Import and Export Consultation and Coordination Services, and Strategic Planning, Appraisal Services, Equipment Location Services, Acquisition and Liquidation Services, Product Liability Evaluation Services, Product Design Evaluation Services.

The statements included in this data concerning predictions of economic performance and management's plans and objectives constitute forward- looking statements made pursuant to the safe harbor provisions of Section 21E of the Securities Exchange Act of 1934, as amended, and Section 27A of the Securities Act of 1934, as amended. These statements involve risks and uncertainties that could cause actual results to differ materially from the forward-looking statements. Factors which could cause or contribute to such differences include, but are not limited to, factors detailed in the Securities and Exchange Commission filings of the company, economic downturns affecting the operations of the company or any of its business operations, the continued availability of financing to fund the company's operations, and the ability of the company or its investment banker to successfully identify and reach an agreement on the sale of the company or its operating units. The forward-looking statements contained in this press release speak only as of the date hereof and the company disclaims any intent or obligation to update these forward-looking statements.

This data, and its associated originals, copies, faxes and emails and any files transmitted with it are confidential and intended solely for the use of the individual or entity to which they are addressed. If you are not the intended recipient, you are hereby notified that any dissemination of this communication is prohibited. Please note that any views or opinions presented in this email are solely those of the author and may not necessarily represent those of the company. Although this data has been scanned with a state-of-the-art antivirus scanner, the recipient should check this information and any attachments for the presence of viruses. The company accepts no liability for any damage caused by any virus transmitted by this data via any method of delivery.